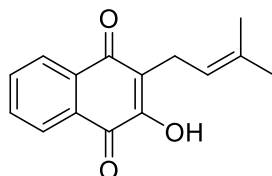


Lapachol

Code No.: **BIA-L2594**

Pack sizes: **1 mg, 5 mg**



Synonyms : Bethabarra Wood, C.I. 75490, C.I. Natural Yellow 16, Greenhartin, Ipe-tobacco Wood, Lapachol Wood, NSC 11905, NSC 629756, Surinam Greenheart Wood, Taigu Wood, Taiguic acid, Tecomin

Specifications

CAS # : **84-79-7**
Molecular Formula : **C₁₅H₁₄O₃**
Molecular Weight : **242.27**
Source : ***Tabebuia* sp.**
Appearance : **Yellow solid**
Purity : **>95% by HPLC**
Long Term Storage : **-20°C**
Solubility : **Soluble in methanol or DMSO**

Application Notes

Lapachol is a yellow pigment derived from *Lomatia* sp. noted in an 1895 publication by Rennie, University of Adelaide, Australia. Lapachol is strongly active against the mollusc *Biomphalaria glabrata* and its egg masses (IC₅₀ 2.70 ppm and 1.43 ppm, respectively). Lapachol is active against the parasites *Trypanosoma cruzi*, *Schistosoma mansoni*, *Leishmania amazonensis* and *L. braziliensis*. Lapachol has a minimum larvicidal/larvostatic concentration (MLC) of 0.5 mg/mL when tested against *Toxocara canis* in vitro.

References

1. LXXXI.—A colouring matter from *Lomatia ilicifolia* and *Lomatia longifolia*. Rennie E.H. J Chem Soc Trans. 1895, 67, 784.
2. Lomatiol. Part II. Its occurrence, constitution, relation to and conversion into lapachol. Hooker S. J Am Chem Soc. 1936, 58, 7, 1181–1190.
3. Anthelmintic activity of lapachol, β-lapachol and its derivatives against *Toxocara canis* larvae. Mata-Santos T. et al. Rev Inst Me. Tro. Sao Paulo 2015, 57, 197.