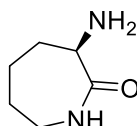


D-Lysine lactam

Code No.: **BIA-L2219**

Pack sizes: **1 mg, 5 mg**



Synonyms : D-(+)- α -Amino- ϵ -caprolactam, (3R)-3-Aminohexahydro-2H-azepin-2-one

Specifications

CAS #	: 28957-33-7
Molecular Formula	: C₆H₁₂N₂O
Molecular Weight	: 128.2
Source	: Synthetic
Appearance	: White solid
Purity	: >95% by HPLC
Long Term Storage	: -20°C
Solubility	: Soluble in methanol or DMSO

Application Notes

D-Lysine lactam is the cyclic amine formed by the dehydration of the amino acid, D-lysine. The formation of lysine lactams is often encountered as a synthetic by-product of peptide chemistry involving lysine. D-Lysine lactam is not been extensively investigated as bioactive metabolite and to date its role is restricted to a negative control to resolve the biological role of its L-isomer.

References

1. None available.