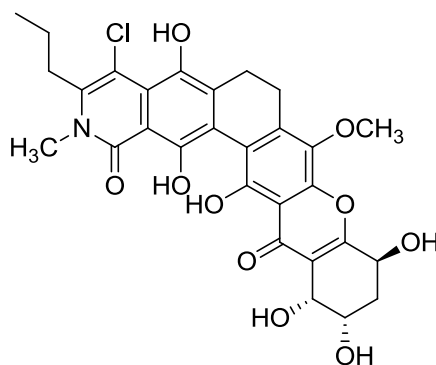


## Kibdelone C

Code No.: **BIA-K1331**

Pack sizes: **1 mg, 5 mg**



Synonyms :

## Specifications

CAS #	: 934464-79-6
Molecular Formula	: C <sub>29</sub> H <sub>28</sub> ClNO <sub>10</sub>
Molecular Weight	: 586.0
Source	: <i>Kibdelosporangium</i> sp.
Appearance	: Orange solid
Purity	: >95% by HPLC
Long Term Storage	: -20°C
Solubility	: Soluble in ethanol, methanol, DMF or DMSO. Limited water solubility.

## Application Notes

Kibdelone C is the major analogue of a potent antitumor complex isolated from *Kibdelosporangium* sp. Structurally, kibdelone C is related to lysolipin and albofungin, however no comparative investigation of this class has been reported. The mode of action and pharmacology of the kibdelones has received little attention.

## References

1. Kibdelones: novel anticancer polyketides from a rare Australian actinomycete. Ratnayake R. et al., Chem. Europ. J. 2007, 13, 1610.