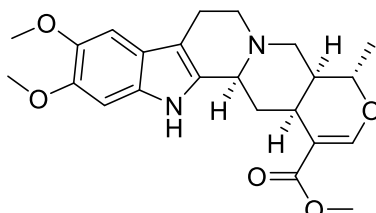


Isoreserpiline

Code No.: **BIA-I1957**

Pack sizes: **1 mg, 5 mg**



Synonyms : 3-Isoreserpiline, 3-Isoreserpilinic acid, methyl ester, Isoreserpilin, Neoreserpiline

Specifications

CAS #	: 572-67-8
Molecular Formula	: C₂₃H₂₈N₂O₅
Molecular Weight	: 412.48
Source	: <i>Neisosperma poweri</i>
Appearance	: Off-white solid
Purity	: >95% by HPLC
Long Term Storage	: -20°C
Solubility	: Soluble in methanol or DMSO

Application Notes

Isoreserpiline is the 3-epimer of reserpiline from *Rauwolfia* and other plant species. Isoreserpiline has hypotensive and antipsychotic activity and shows efflux pump inhibitory potential. Isoreserpiline significantly potentiates the activity of nalidixic acid against *E. coli* strains CA8000 and DH5 α . Isoreserpiline reduces the MIC of tetracycline against the MDREC-KG4, a multidrug-resistant clinical isolate of *E. coli*.

References

1. Alkaloids from the leaves and roots of *Rauwolfia canescens*. Stoll A. & Hofmann A. *Helv Chim Acta* 1955, 38, 270.
2. Survey of secondary plant metabolites with cardiovascular activity. Ghisalberti E. et al. *Pharmaceutical Biology* 1998, 36, 237.
3. Synergy potential of indole alkaloids and its derivative against drug-resistant *Escherichia coli*. Dwivedi G.R. et al. *Chem Biol Drug Design* 2015, 86, 1471.