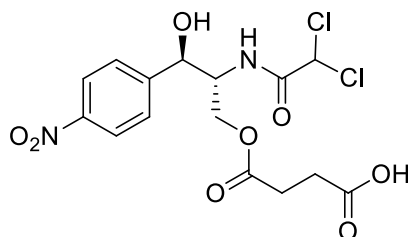


## Chloramphenicol succinate

Code No.: **BIA-C1478**

Pack sizes: **5 mg, 25 mg**



Synonyms : Chloramphenicol succinate, Kemicetine

### Specifications

CAS #	: <b>3544-94-3</b>
Molecular Formula	: <b>C<sub>15</sub>H<sub>16</sub>Cl<sub>2</sub>N<sub>2</sub>O<sub>8</sub></b>
Molecular Weight	: <b>423.2</b>
Source	: <b>Semi-synthetic</b>
Appearance	: <b>White solid</b>
Purity	: <b>&gt;95% by HPLC</b>
Long Term Storage	: <b>-20°C</b>
Solubility	: <b>Soluble in ethanol, methanol, DMF or DMSO. Moderate water solubility.</b>

### Application Notes

Chloramphenicol succinate is prepared by acylation of chloramphenicol with succinic anhydride to provide a water soluble pro-drug. Chloramphenicol succinate represents an alternative pro-drug strategy for chloramphenicol that has found a niche in surface antibiotic treatment in surgery. Chloramphenicol succinate is significantly less active than chloramphenicol but acts as a prodrug, forming chloramphenicol in the presence of succinate dehydrogenase.

### References

1. Chloramphenicol succinate, a competitive substrate and inhibitor of succinate dehydrogenase: possible reason for its toxicity. Ambekar C.S. et al., Toxicology in vitro 2004, 18, 441.